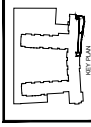




MA ASID NCARB  
 ARCHITECTURE  
 INTERIOR DESIGN  
 PLANNING  
 WWW.KOBIKARP.COM  
 3150 NE 17TH AVE  
 SUITE 100  
 MIAMI BEACH, FL 33139

KOBI KARP  
 LLC # A00012578

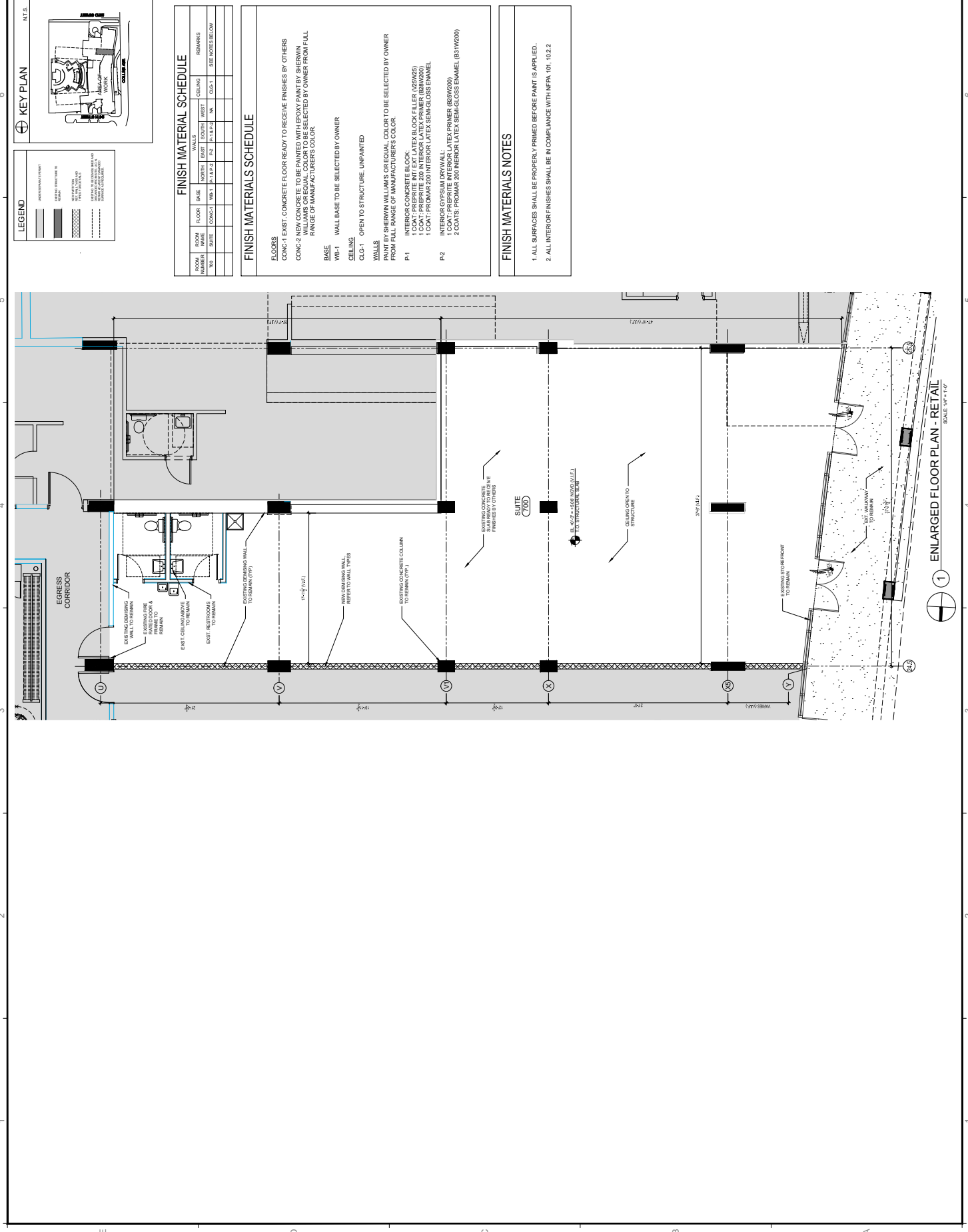
DESIGNER  
 HOTEL & HOMES  
 SOUTH BEACH



the PERRY | SOUTH BEACH  
 2277 COLLINGS AVENUE  
 MIAMI BEACH, FL 33139

1303

REVISIONS/ SUBMISSIONS

**LEGEND**

INTERIOR FINISHES  
 CEILING FINISHES TO  
 REMAIN  
 NEW WARMING WALL  
 NEW WARMING WALL TYPES  
 NEW WARMING WALL TYPES  
 NEW WARMING WALL TYPES  
 NEW WARMING WALL TYPES

**FINISH MATERIAL SCHEDULE**

ROOM NUMBER	FLOOR	WALL	WALLS				REMARKS
			NORTH	SOUTH	WEST	EAST	
700	CONC-1	WB-1	P-1, P-2	P-2	CG-1	SEE NOTES BELOW	

**FINISH MATERIALS SCHEDULE**

FLOORS  
 CONC-1 EXIST. CONCRETE FLOOR READY TO RECEIVE FINISHES BY OTHERS  
 CONC-2 NEW CONCRETE TO BE PAINTED WITH EPOXY PAINT BY SHERWIN WILLIAMS OR EQUAL. COLOR TO BE SELECTED BY OWNER FROM FULL RANGE OF MANUFACTURER'S COLOR.

BASE  
 WB-1 WALL BASE TO BE SELECTED BY OWNER

CEILING  
 CG-1 OPEN TO STRUCTURE. UNPAINTED

WALLS  
 PAINT BY SHERWIN WILLIAMS OR EQUAL. COLOR TO BE SELECTED BY OWNER FROM FULL RANGE OF MANUFACTURER'S COLOR.

P-1 INTERIOR CONCRETE BLOCK:  
 1 COAT: PREPRITE INT/EXT LATEX BLOCK FILLER (V24W2R)  
 1 COAT: PROMAR 200 INTERIOR LATEX SEMI-GLOSS ENAMEL

P-2 INTERIOR OVERSLAM CONCRETE:  
 1 COAT: PREPRITE INTERIOR LATEX PRIMER (R59W200)  
 2 COATS: PROMAR 200 INTERIOR LATEX SEMI-GLOSS ENAMEL (B31W200)

**FINISH MATERIALS NOTES**

1. ALL SURFACES SHALL BE PROPERLY PRIMED BEFORE PAINT IS APPLIED.  
 2. ALL INTERIOR FINISHES SHALL BE IN COMPLIANCE WITH NFPA 101, 102.2



ENLARGED FLOOR PLAN - RETAIL  
 SCALE: 1/4" = 1'-0"